

Concerto grosso op. 6 Nr. 8

Fatto per la notte di Natale

Cello / Bass
Concerto grosso

Arcangelo Corelli
1653-1713

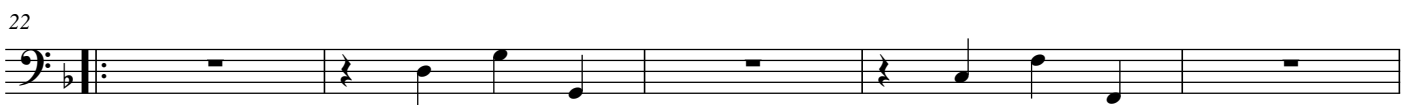
I - Vivace



7 Grave. Arcate sostenuto e come stà



II - Allegro



III - Adagio



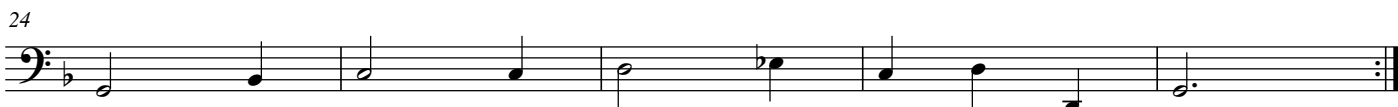
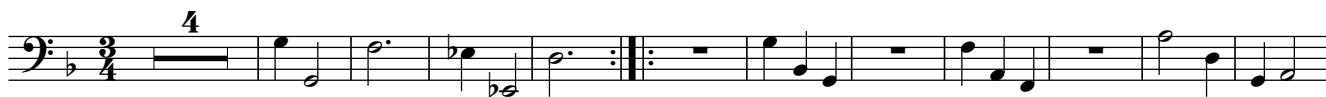
[III] - Allegro



[III] - Adagio



IV - Vivace



[V] - Allegro

Musical score for [V] - Allegro, Cello/Bass part. The score consists of seven staves of music in bass clef, 2/4 time signature, and B-flat major key. The first staff starts with a whole rest. The second staff begins at measure 8. The third staff begins at measure 16. The fourth staff begins at measure 24 and includes a first ending bracket over measures 24-25 with a '2' above it. The fifth staff begins at measure 32. The sixth staff begins at measure 40. The seventh staff begins at measure 48 and includes a first ending bracket over measures 63-64 with a '1.' above it. The piece concludes with a double bar line and a key signature change to B major.

Pastorale
VI - Largo

Musical score for Pastorale VI - Largo, Cello/Bass part. The score consists of four staves of music in bass clef, 12/8 time signature, and B major key. The first staff begins at measure 65 and includes a first ending bracket over measures 65-66 with a '2.' above it. The second staff begins at measure 75 and includes a first ending bracket over measures 75-76 with a '4' above it. The third staff begins at measure 80. The fourth staff begins at measure 84. Dynamics include *p* (piano) at measure 75 and *mf* (mezzo-forte) at measures 80 and 84.

89

mf *mp*

93

mf

97

mf

101

mf 5

109

f 2

114

mf

118

mf

121

mf