

# Concerto grosso op. 6 Nr. 8

Fatto per la notte di Natale

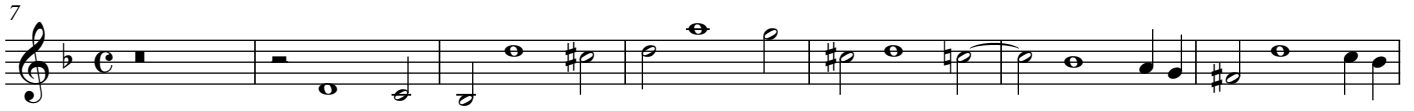
Violine 1  
Concertino

Arcangelo Corelli  
1653-1713

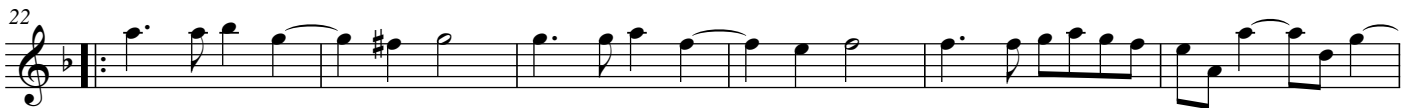
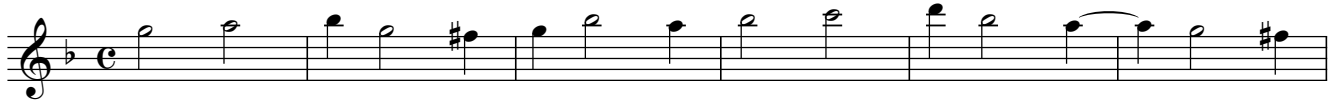
## I - Vivace



## Grave. Arcate sostenuto e come stà



## II - Allegro



## III - Adagio



[III] - Allegro

Musical score for [III] - Allegro, measures 9-18. The score is written in treble clef with a key signature of one flat (B-flat). The tempo is marked Allegro. The music consists of four staves of music. The first staff (measures 9-11) features a continuous eighth-note pattern. The second staff (measures 12-14) continues this pattern with some melodic variation. The third staff (measures 15-17) shows a similar rhythmic texture. The fourth staff (measures 18) concludes with a few notes and a fermata.

[III] - Adagio

Musical score for [III] - Adagio, measures 22-30. The score is written in treble clef with a key signature of one flat (B-flat). The tempo is marked Adagio. The music consists of three staves of music. The first staff (measures 22-25) features a melodic line with some grace notes. The second staff (measures 26-29) continues the melodic development. The third staff (measures 30) concludes with a few notes and a fermata.

IV - Vivace

Musical score for IV - Vivace, measures 1-22. The score is written in treble clef with a key signature of one flat (B-flat) and a 3/4 time signature. The tempo is marked Vivace. The music consists of four staves of music. The first staff (measures 1-7) features a melodic line with trills. The second staff (measures 8-14) continues the melodic development. The third staff (measures 15-21) shows a similar rhythmic texture. The fourth staff (measures 22) concludes with a few notes and a fermata.

[V] - Allegro

7  
14  
21  
27  
34  
41  
48  
55  
62

Pastorale  
VI - Largo

72  
77

82 Musical staff 82: Treble clef, key signature of one sharp (F#). Measures 82-86. Dynamics: *p*, *mf*.

87 Musical staff 87: Treble clef, key signature of one sharp (F#). Measures 87-91. Dynamics: *p*, *mf*.

92 Musical staff 92: Treble clef, key signature of one sharp (F#). Measures 92-96. Dynamics: *mp*, *mf*, *p*.

97 Musical staff 97: Treble clef, key signature of one sharp (F#). Measures 97-101. Dynamics: *mf*.

102 Musical staff 102: Treble clef, key signature of one sharp (F#). Measures 102-106. Dynamics: *p*.

107 Musical staff 107: Treble clef, key signature of one sharp (F#). Measures 107-111. Dynamics: *mf*.

112 Musical staff 112: Treble clef, key signature of one sharp (F#). Measures 112-116. Dynamics: *f*.

117 Musical staff 117: Treble clef, key signature of one sharp (F#). Measures 117-120. Dynamics: *mf*.

121 Musical staff 121: Treble clef, key signature of one sharp (F#). Measures 121-124. Dynamics: *mf*.