

Concerto grosso op. 6 Nr. 8

Fatto per la notte di Natale

Violine 2
Concertino

Arcangelo Corelli
1653-1713

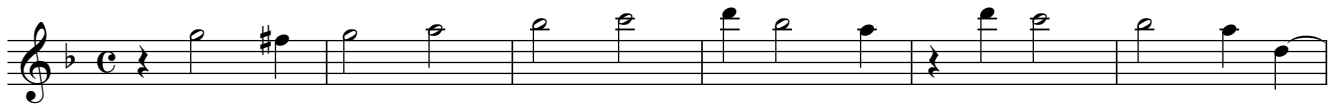
I - Vivace



Grave. Arcate sostenuto e come stà



II - Allegro



III - Adagio



[III] - Allegro

Musical score for [III] - Allegro, measures 9-17. The score is written in treble clef with a key signature of one flat (B-flat). The tempo is marked Allegro. The music consists of three staves of music. The first staff starts at measure 9 and ends at measure 12. The second staff starts at measure 13 and ends at measure 16. The third staff starts at measure 17 and ends at measure 17. The music features a mix of eighth and sixteenth notes, with some rests and a final measure ending with a fermata.

[III] - Adagio

Musical score for [III] - Adagio, measures 22-30. The score is written in treble clef with a key signature of one flat (B-flat). The tempo is marked Adagio. The music consists of three staves of music. The first staff starts at measure 22 and ends at measure 25. The second staff starts at measure 26 and ends at measure 29. The third staff starts at measure 30 and ends at measure 30. The music features a mix of eighth and sixteenth notes, with some rests and a final measure ending with a fermata.

IV - Vivace

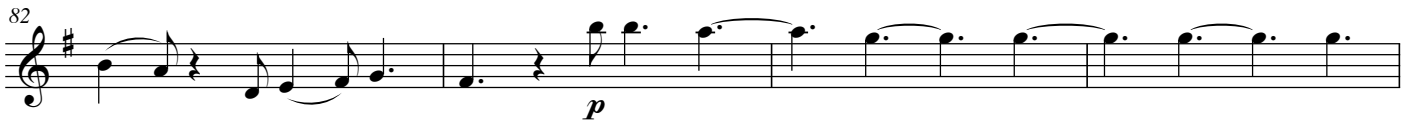
Musical score for IV - Vivace, measures 1-22. The score is written in treble clef with a key signature of one flat (B-flat) and a 3/4 time signature. The tempo is marked Vivace. The music consists of four staves of music. The first staff starts at measure 1 and ends at measure 7. The second staff starts at measure 8 and ends at measure 14. The third staff starts at measure 15 and ends at measure 21. The fourth staff starts at measure 22 and ends at measure 22. The music features a mix of eighth and sixteenth notes, with some rests and a final measure ending with a fermata. Trills (tr.) are indicated above several notes.

[V] - Allegro

Musical score for [V] - Allegro, measures 1-62. The score is written in treble clef with a key signature of one flat (B-flat) and a common time signature (C). The music consists of a single melodic line. Measure numbers 7, 14, 21, 27, 34, 41, 48, 55, and 62 are indicated at the start of their respective staves. The piece concludes with a first ending bracket over the final two measures of the 62nd staff, ending with a double bar line and a repeat sign.

Pastorale
VI - Largo

Musical score for Pastorale VI - Largo, measures 62-77. The score is written in treble clef with a key signature of one sharp (F#) and a 12/8 time signature. Measure numbers 72 and 77 are indicated at the start of their respective staves. The music consists of a single melodic line. Dynamic markings *p* (piano) and *mf* (mezzo-forte) are present. The piece concludes with a first ending bracket over the final two measures of the 77th staff, ending with a double bar line and a repeat sign.

82 

86 

90 

94 

98 

102 

106 

110 

114 

118 

122 