

Concerto grosso op. 6 Nr. 8

Fatto per la notte di Natale

Cello / Bass
Concerto grosso

Arcangelo Corelli
1653-1713

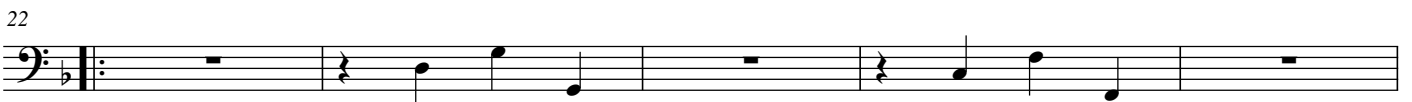
I - Vivace



7 Grave. Arcate sostenuto e come stà



II - Allegro



III - Adagio



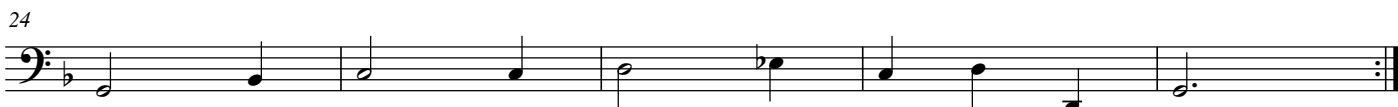
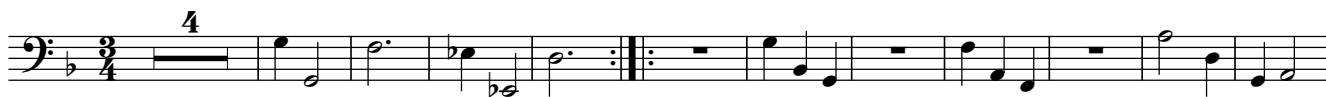
[III] - Allegro



[III] - Adagio



IV - Vivace



[V] - Allegro

Musical score for [V] - Allegro, measures 1-64. The score is written in bass clef with a key signature of one flat (B-flat) and a common time signature (C). The music consists of several lines of notes, including rests, eighth notes, and quarter notes. Measure 24 features a double bar line with a first ending bracket above it. Measure 64 ends with a double bar line, a first ending bracket above it, and a key signature change to two sharps (D major) and a time signature change to 12/8.

Pastorale
VI - Largo

Musical score for Pastorale VI - Largo, measures 65-84. The score is written in bass clef with a key signature of two sharps (D major) and a 12/8 time signature. The music features a mix of note values, including quarter notes, eighth notes, and sixteenth notes, with some rests. Measure 75 includes a dynamic marking of *mf*. Measure 84 includes a dynamic marking of *mf*.

89

mf *mp*

93

mf

97

mf

101

mf 5

109

f 2

114

118

mf

121