

Weihnachts-Sinfonie

Bratsche

OP. 2, 12

Francesco Manfredini
(1688-1750)

Largo

First staff of the Largo section, measures 1-4. The key signature is one sharp (F#) and the time signature is 12/8. The dynamics are *f*, *p*, and *f*.

5

Second staff of the Largo section, measures 5-10. The dynamics are *f* and *p*.

11

Third staff of the Largo section, measures 11-16. The dynamics are *f* and *p*.

17

Fourth staff of the Largo section, measures 17-24. The dynamics are *f* and *p*.

25

Fifth staff of the Largo section, measures 25-32. The dynamics are *f* and *p*.

Adagio

First staff of the Adagio section, measures 1-9. The key signature is one sharp (F#) and the time signature is 3/4. The dynamics are *mf*, *p*, and *mf*.

10

Second staff of the Adagio section, measures 10-17. The dynamics are *p* and *f*.

18

Third staff of the Adagio section, measures 18-25. The dynamics are *p* and *f*.

Largo e puntato [Andante]

First staff of the Largo e puntato section, measures 1-7. The key signature is one sharp (F#) and the time signature is common time (C). The dynamics are *f* and *p*.

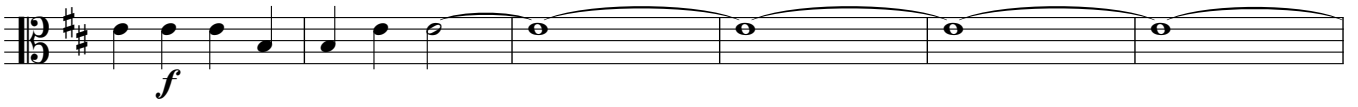
8

Second staff of the Largo e puntato section, measures 8-15. The dynamics are *p* and *f*.

15



21



27



36



42



48

