

Suite in F-Dur

Entrée

Christian Friedrich Witt
(um 1660-1716)

The 'Entrée' movement is written in 3/4 time with a key signature of one flat (F major). It consists of three staves of music. The first staff begins with a treble clef and a common time signature 'C', which then changes to 3/4. The melody is composed of eighth and quarter notes. The second staff features a first ending (marked '1.') and a second ending (marked '2.'). The third staff continues the melody with similar rhythmic patterns and includes another first and second ending.

Sarabande

The 'Sarabande' movement is in 3/4 time with a key signature of one flat (F major). It consists of three staves of music. The first staff starts with a treble clef and a 3/4 time signature. The melody is primarily composed of quarter notes. The second staff includes a repeat sign with first and second endings, marked with a double bar line and a section symbol (§). The third staff continues the piece and ends with a double bar line.

Menuet I

The 'Menuet I' movement is in 3/4 time with a key signature of one flat (F major). It consists of four staves of music. The first staff begins with a treble clef and a 3/4 time signature. The melody is composed of quarter notes. The second staff features a first ending (marked with a double bar line and repeat dots) and a second ending. The third and fourth staves continue the melody with quarter notes and end with a double bar line.

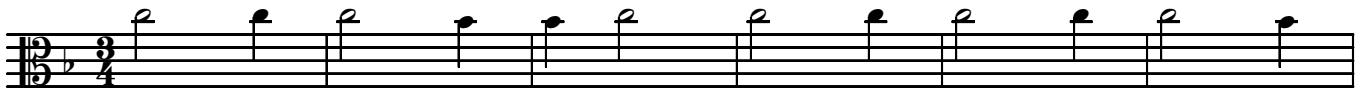
Bourée



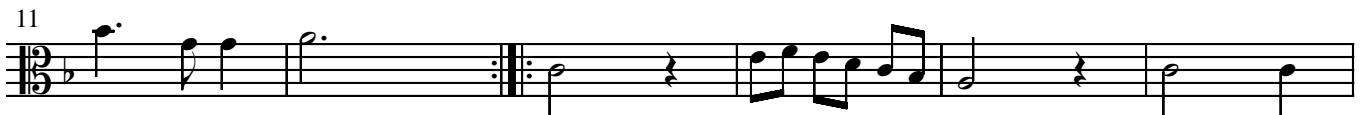
6



Menuet II



11



17



23

